



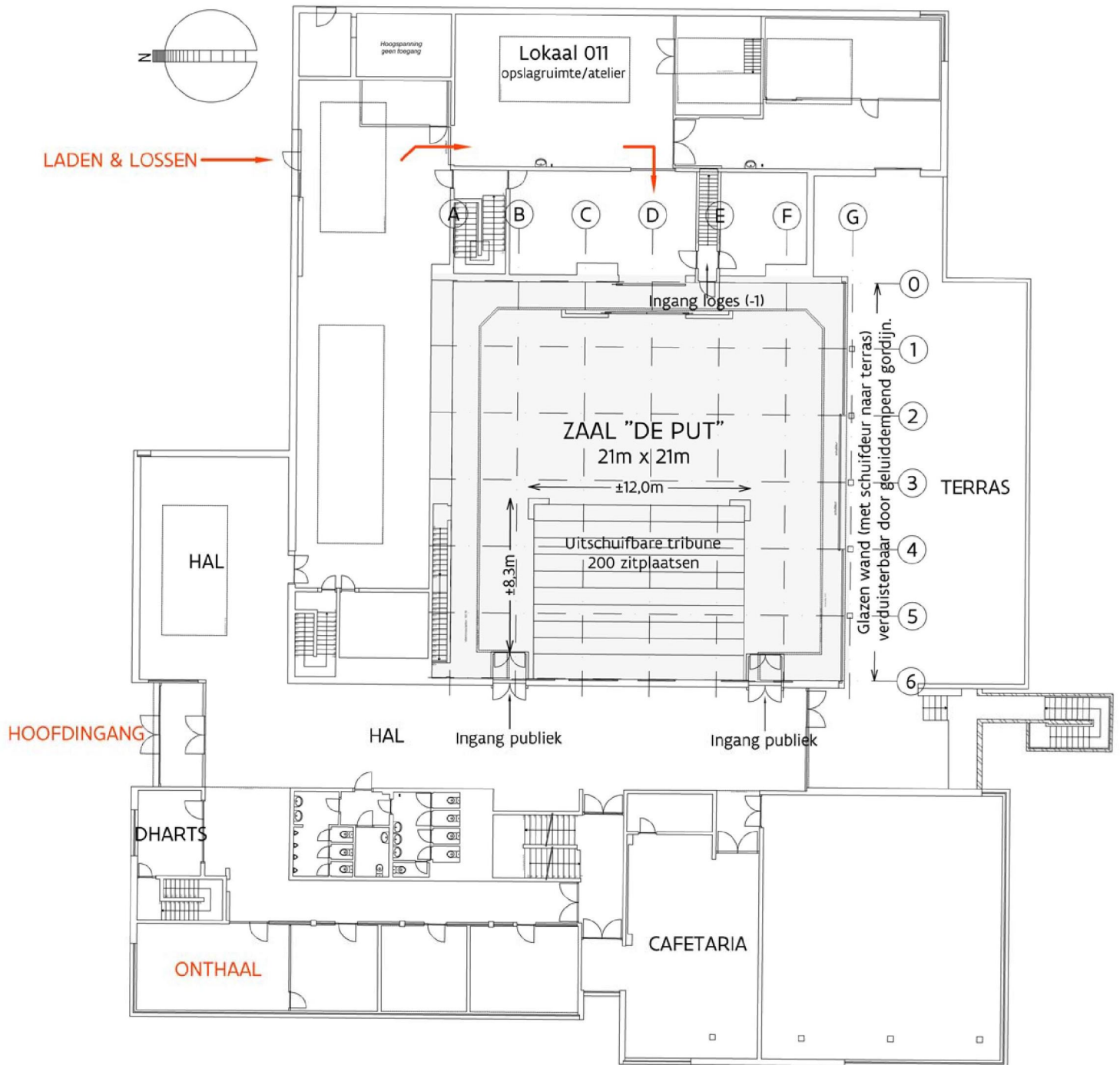
**DESTELHEIDE**

**Destelheide**  
vzw Algemene Dienst voor Jeugdtoerisme  
Destelheidestraat 66, 1653 Dworp  
tel +32 2 380 39 15 /fax +32 2 380 52 51  
info@destelheide.be /www.destelheide.be

## Technical rider Zaal De Put



# Hoofdgebouw - Algemeen grondplan



## General information

- Size of entire room: 21 by 21 metre
- Height below spotlight beams: 7 metre
- Extendable and retractable gallery with 200 seats, can only be extended as a whole.
- The capacity can be extended to 350 seats using extra chairs.
- The room can be fully darkened using electrically driven window curtains, which can only be operated from the balcony after having received the corresponding instructions from our technician.
- 1 'cour' and 1 'jardin' curtain, can be closed or opened completely.
- Parquet floor
- Dance floor of 10 metre wide x 8 metre deep is available.
- 8 hanging points and 4 water tanks are available (cf. technical information sheet 'hanging points')
- 32 podium elements of 2 m<sup>2</sup> (64 m<sup>2</sup>), adjustable in height (20 by 80 cm)
- 2 lecterns
- Upright piano (price conditions can be obtained from reception or technical team)
- 2 boxes accessible from event hall De Put, via a staircase
  - each:** 3 washbasins, 4 make-up mirrors with lights, 2 dressing mirrors, 1 table, 10 chairs, 5 stools
  - separately in hallway:** lavatory, showers (2 for women, 2 for men)
- Catering: 15 walking dinner tables and 3 buffet tables (with small awning) available

### Requested equipment (delete if inapplicable):

*Gallery retracted / extended*

*Extra chairs (number: ...) / no extra chairs*

*Dance floor / no dance floor*

*Hanging points / no hanging points*

*Water tanks / no water tanks*

*Podium elements (number: ...) / no podium elements*

*Lecterns / no lecterns*

*Upright piano / no upright piano*

*Boxes (number: ...) / no boxes*

*Walking dinner tables (number: ...) / no walking dinner tables*

*Buffet tables (number: ...) / no buffet tables*

# Audio equipment

- 6 speakers Active 2-Way Line-Array Module 2x8/1x2,5, 900W/RMS,
- 4 bass speakers: Active 1x18" Subwoofer Bass-Reflex 1600W/RMS, RD-Net
- 7 monitors JBL Eon610 active speakers
- 3 vocal microphones: SM58 (Shure)
- 4 wireless microphones: (Sennheiser E835)
- 20 wired microphones: type Behringer and MICPRO1
- 8 microphone stands (+ 20 desk stands)
- Information on XLR leads and accessories can be obtained from the senior technician.
- Small audio installation with mixing console (brand: Allen&Heath ZED14) with max. 6 microphones (2 wireless and 4 with XLR connection or 6 with XLR connection), 2 CD players. Can be delivered without technician.
- Mixing console (brand: Behringer type: X32), can be controlled from the control room or from the stage. Always with technician from Destelheide.

## Requested audio equipment:

...

# Beamer

- Type beamer: Epson WUXGA - 9000 Lumen - Contrast: 2.500.000:1 STANDAARD LENS INC.
- Video projection on a white, electrically extendable background screen (see next page)
- Fixed beamer with VGA- and HDMI-connection, wireless connection available via Clickshare (our technicians can explain it at Destelheide)
- Mac adapter for VGA and HDMI available.
- (also available: overhead projector and small screen)

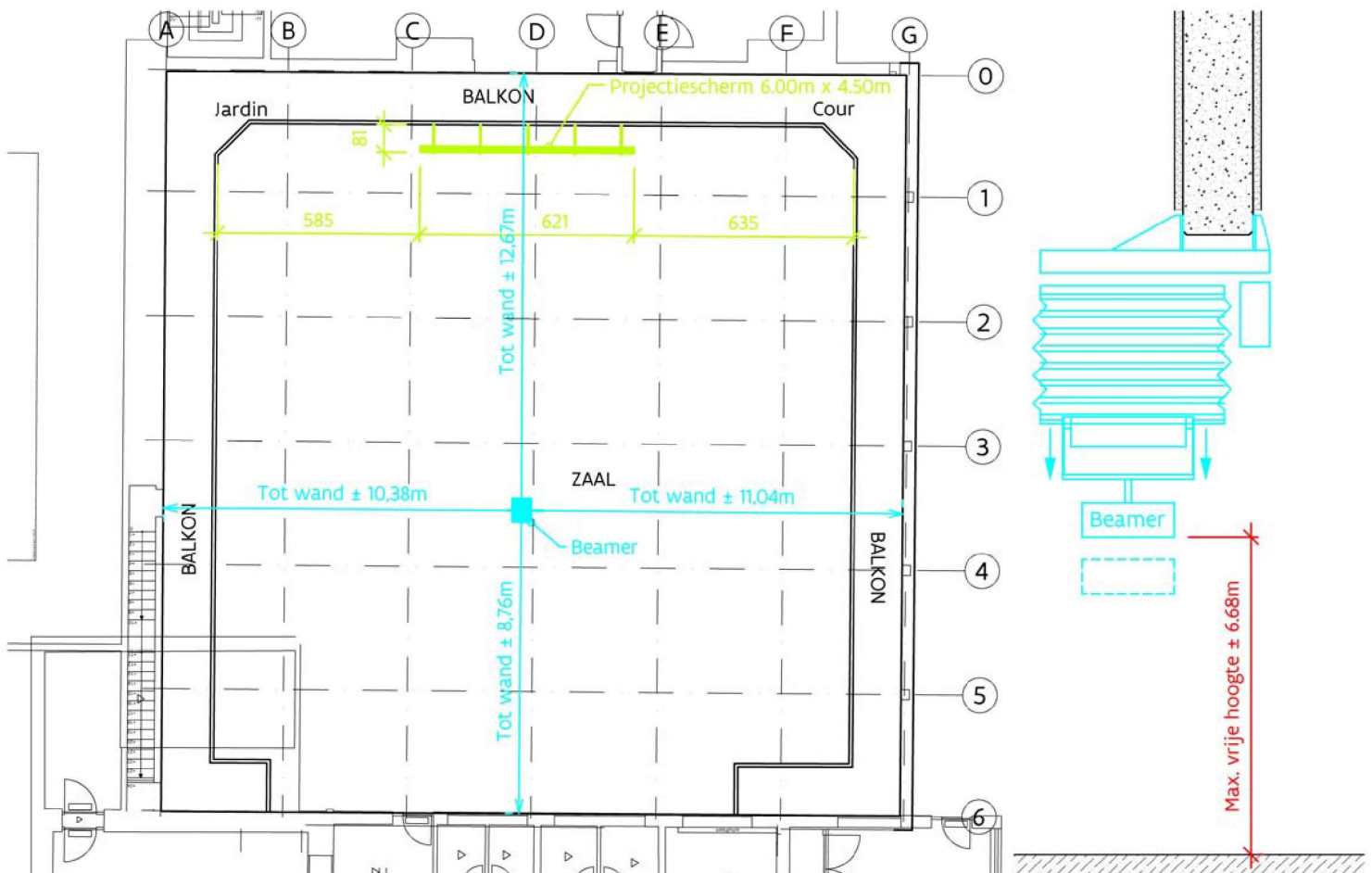
Requested equipment (delete if inapplicable):

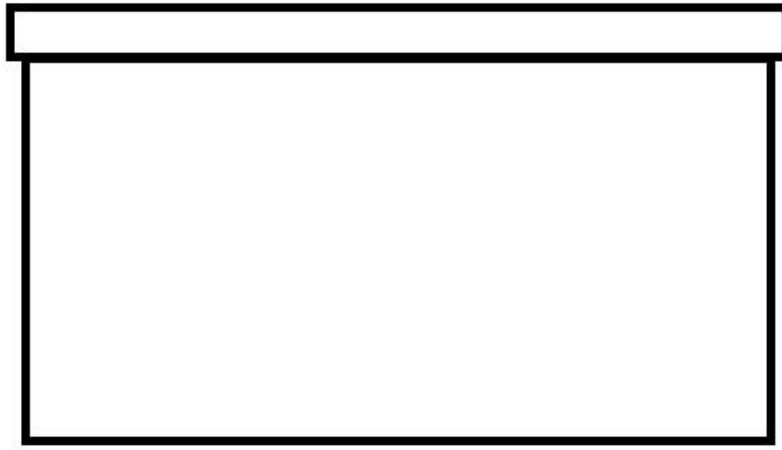
*Use of beamer and background screen / no use of beamer and background screen*

*Mac adapter / no Mac adapter*

*Overhead projector and small screen / no overhead projector or small screen*

## Zaal "De Put" - Inplanting projectiescherm + beamer





6 m

3m45

1m25

Vloer

# Lighting

- 6x **PC** floodlights 2 KW
- 12x **PC** floodlights 1 KW
- 2x **contour** floodlights 2 KW
- 20x **PAR** lights 300W
- 4 stands for individual spotlights available (which must be connected to the spotlight beams, no power outlets available at the sides or in the floor)
- Complete range of colour filters
  - White (without filter)
  - Yellow (I100s)
  - Bright orange (I105r)
  - Pink (I113r)
  - Blue/green (I115r)
  - Dark blue (I118r)
  - Green (I121)
  - Dark green (I124)
  - Turquoise (I126r)
  - Dark dark blue (I141s)
  - Orange (I152r)
  - Red (I164s)
  - Purple (I170s)
  - Blue (I174s)
- Mixing console from within the room or control room: ADB Cantor, with 96 channels, programmable, always with technician from Destelheide. Can also be controlled by the group's technician after submitting of lighting technician certificate.
- LED-spots (100W/150W/160W/stage painters/stage beamers/cyclo bars/Moving heads/...) + Chamsys MagicQ MQ

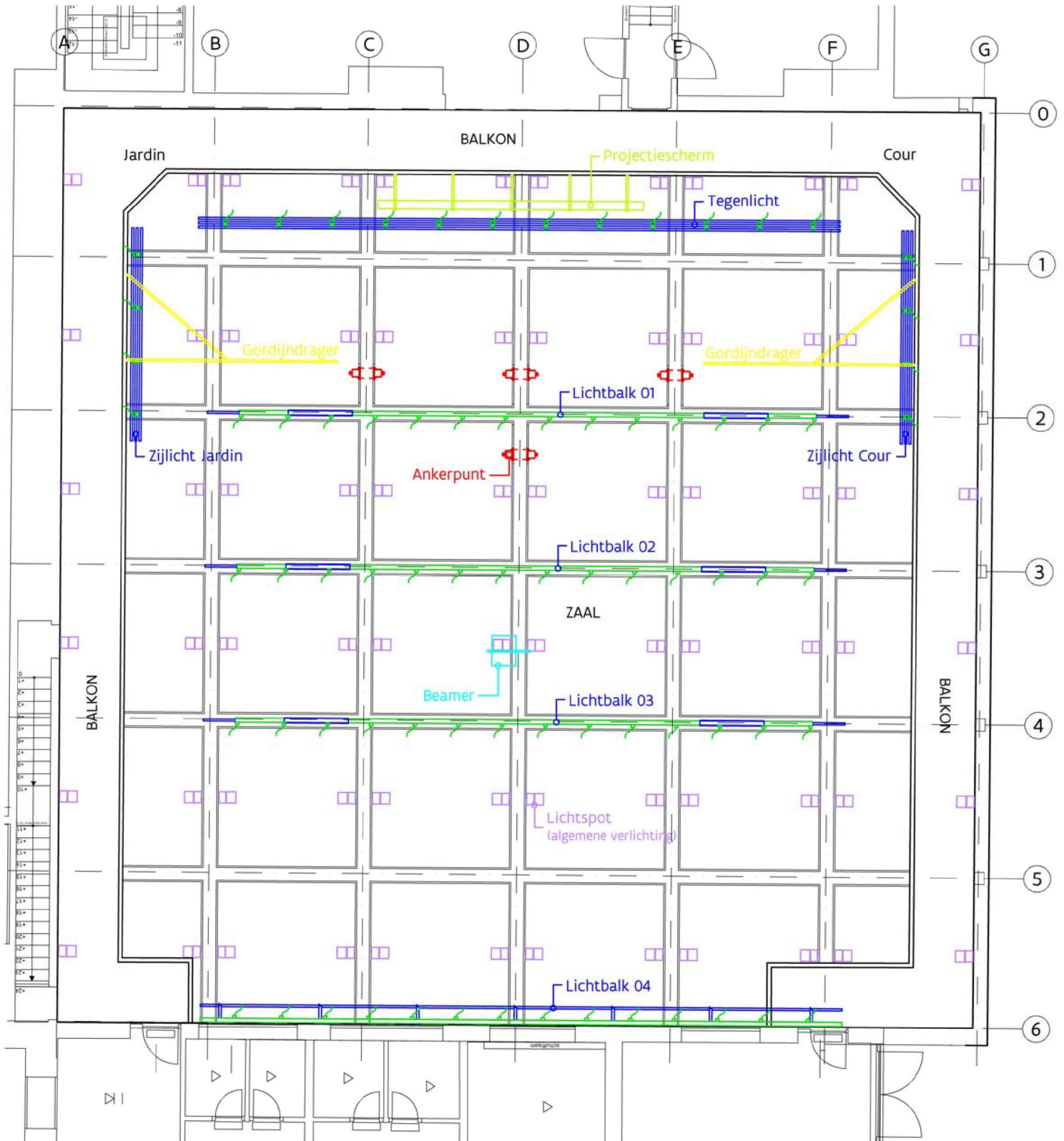
The backlight beam at the back is a fixed light beam and can be reached using the hydraulic platform only.

Light beam 4 can only be reached via the gallery using a ladder, not with a hydraulic platform. Sidelights from the balcony.

Requested lighting equipment: please make notes on the drawing on page 9:

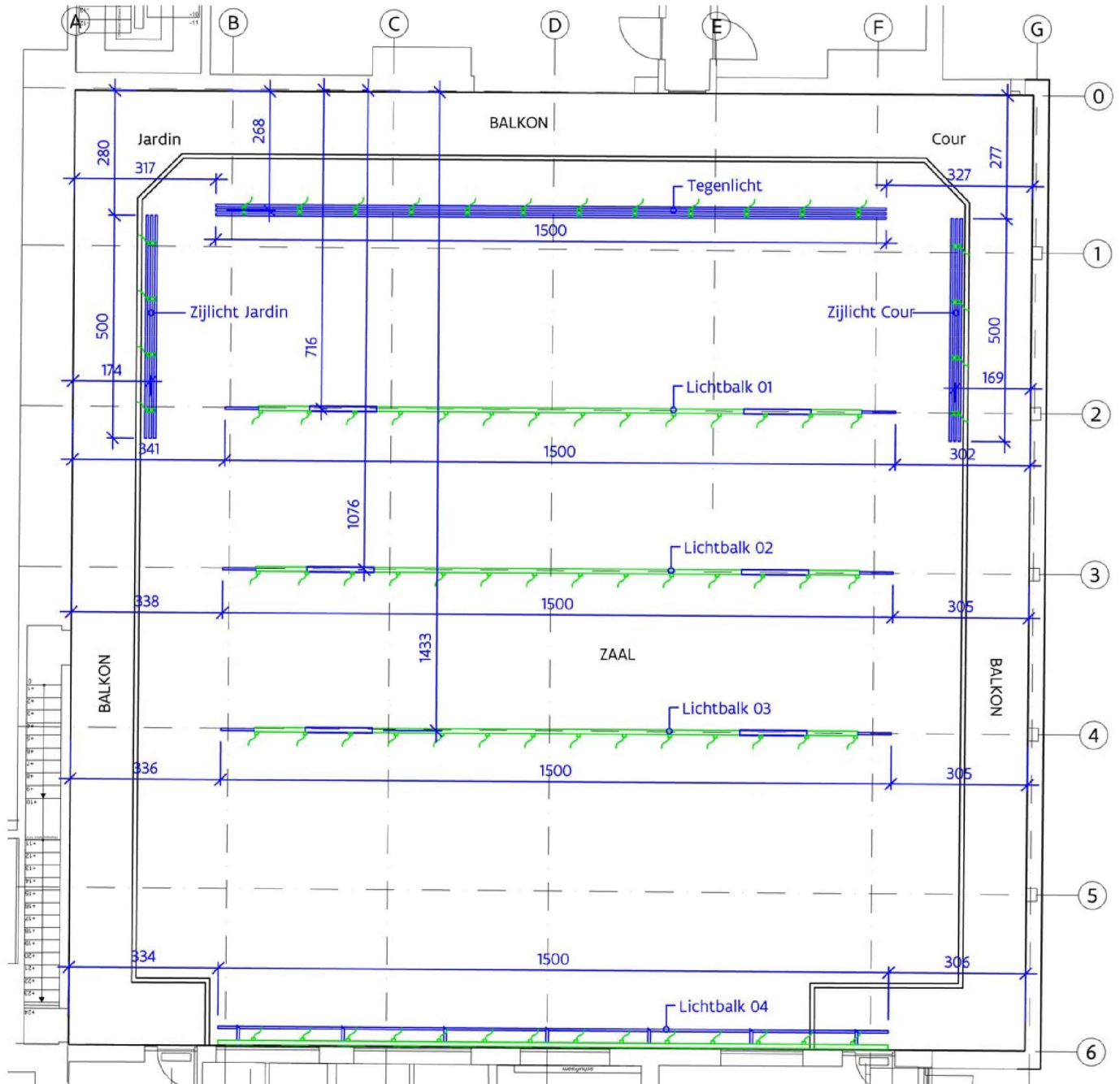
...

# Zaal "De Put" - Algemeen plafondplan

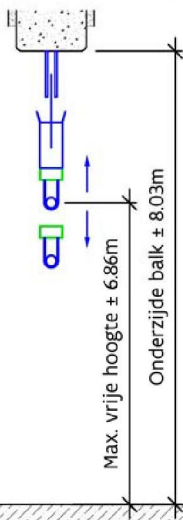




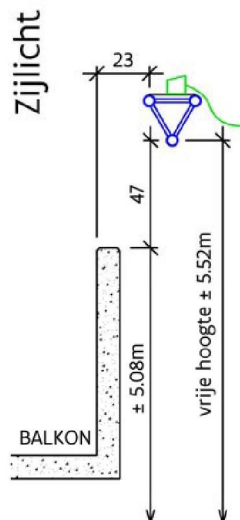
# Zaal "De Put" - Inplanting lichtbalken



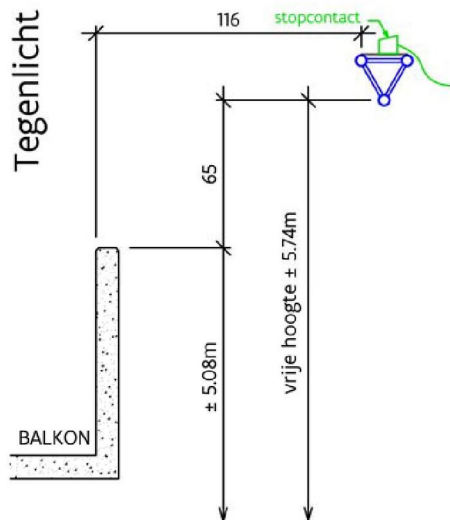
Lichtbalken 1-2-3



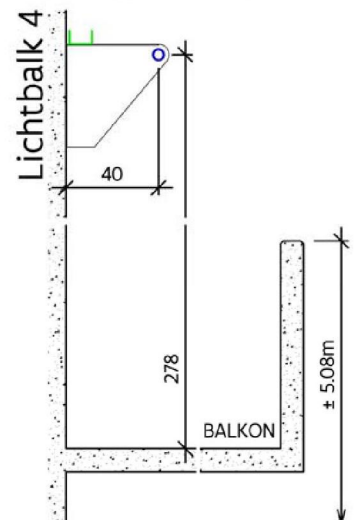
Zijlicht



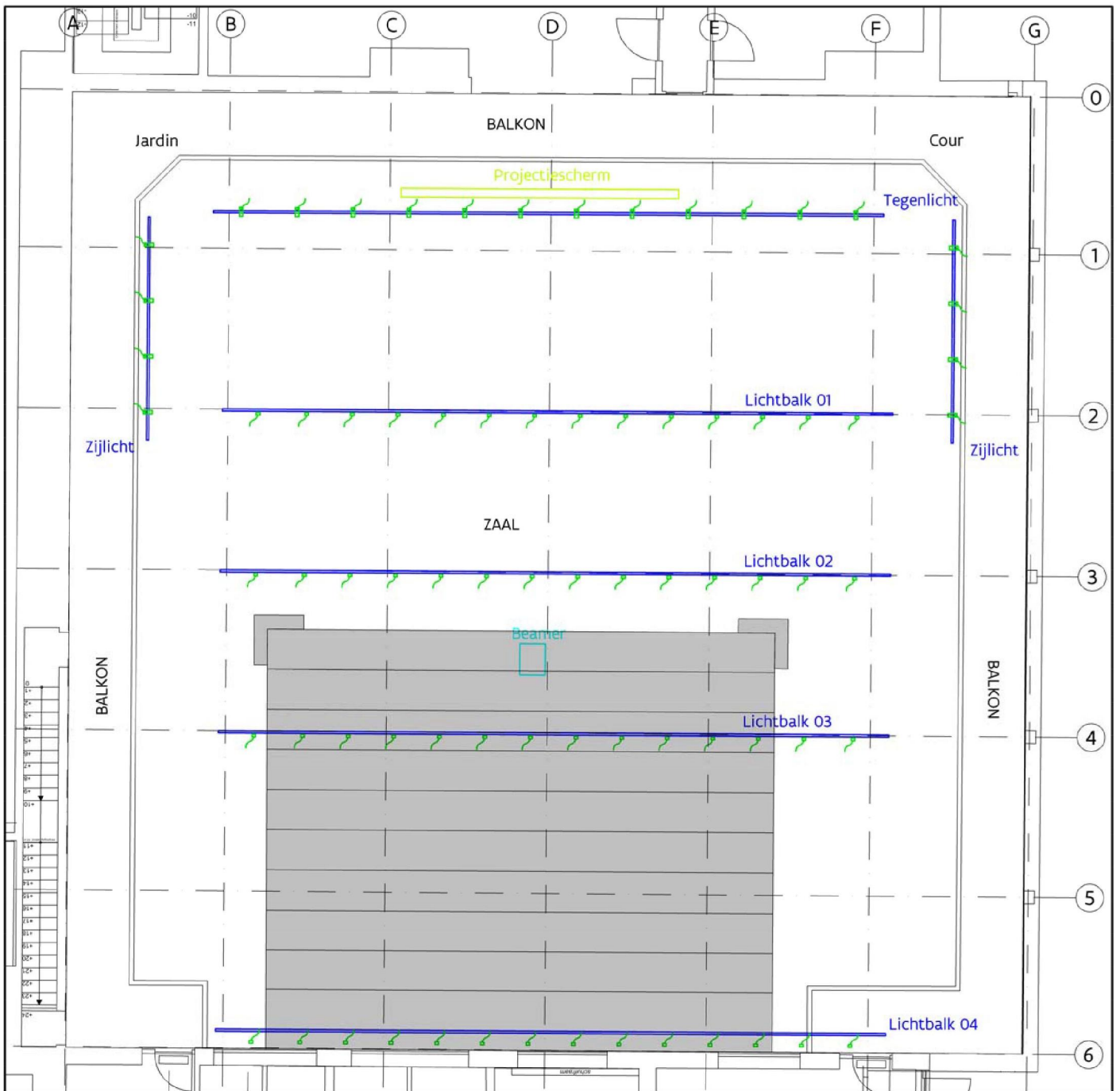
Tegenlicht



Lichtbalk 4



# Zaal "De Put" - Aanvraag belichting / opmerkingen



▶ PAR (20 st.)

□ PC 1kW (12 st.)

⊗ PC 2kW (6 st.)

○ Prof 2kW (2 st.)

Op dit document kan je een schets maken van de gewenste belichting. Je kan hieronder ook nog opmerkingen kwijt:

# Regulations

- Loading and unloading are done through a sliding door in front of which the vehicle to be (un)loaded may park for loading and unloading only. After this, the vehicle can be parked on the car park.
- Technicians from Destelheide are available during office hours until 4 pm.
- Setting of lighting, sound checks, etc. must be requested beforehand, both as to the date and the number of working hours.
- Technical assistance beyond office hours is charged.
- Ladder, hydraulic platform and light beams can be operated by a certified technician of the group provided that a statement confirming the group's responsibility for damage and accidents is signed.
- Light beams are intended for suspending spotlights only, no other loads or stage props may be suspended from them. Light beams should not be used for hoisting purposes.
- The balcony is accessible to technicians only.
- All own equipment must comply with the prevailing legislation, ARAB, AREI & Vlarem II.
- Technical equipment can be taken from the backstage area by a Destelheide technician only.
- All use of smoke, fire, pyrotechnology, water... is strictly forbidden.
- It is forbidden to smoke, eat and drink in the room and on stage.
- Damage to the parquet floor (e.g. caused by decorative objects) is charged.
- If the group's technician changes the position of spotlights, these should be re-placed in their original position after the performance (at the spotlight beams + plugged in).
- The room must be left in a neat and orderly state (swept clean with a broom).

Please complete and return this technical data sheet two weeks prior to the event at the latest to the reception of Destelheide: [info@destelheide.be](mailto:info@destelheide.be)

Technical assistance required: yes / no (*delete if inapplicable*)

If yes, on ..... from ..... up to ..... h

Installation scheduled on ..... from ..... up to ..... h

Disassembly scheduled on ..... from ..... up to ..... h